

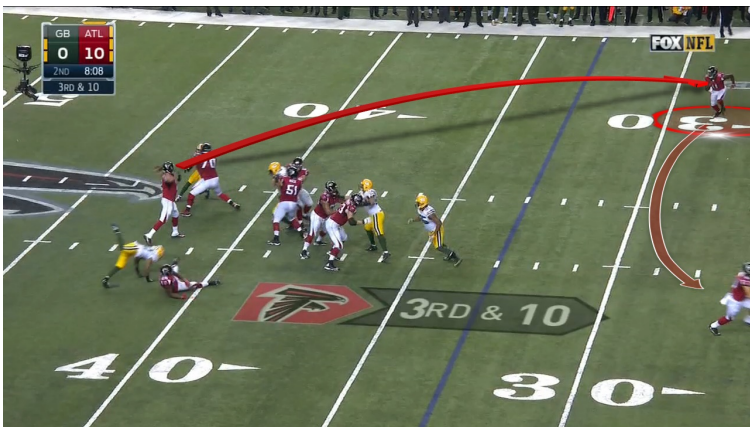
COACH PAINT



A POWERFUL AND USER-FRIENDLY VIDEO TOOL
DESIGNED FOR COACHES OF ALL SPORTS.

COACH PAINT IS THE MOST WIDELY USED VIDEO ANALYSIS SOFTWARE IN PROFESSIONAL SPORT.

Coach Paint is the most widely used video analysis software in professional sport. Utilized by some of the most well-known sporting organizations around the world, Coach Paint supports teams, coaches, pundits, and producers in creating world-class video assets using live, pre-, and post-game analysis. Adaptable to any type of workflow and operating systems, Coach Paint allows your team to create content wherever it is. Whether you're on-the-go, in the training ground, or at a stadium, Coach Paint's touch screen connectivity keeps you mobile with iPad centered workflows.



Captivating players with engaging video playback, Coach Paint is a virtual video playbook to support self-scouting, team highlights, education, and recruitment.



With an out-of-the-box, multi-feature toolset, Coach Paint comes complete with player cut-out, spotlight, zoom, player tracking, zone tracking and more robust resources to enhance your analysis. Take advantage of Coach Paint's play-calling capabilities to create the same graphics you're familiar with from broadcast games and highlight shows.



Coach Paint's easy-to-use chroma-keyer enables telestrator graphics to appear on the pitch without covering field lines, the ball or players. Featuring an internal image-based tracking engine, Coach Paint eliminates the need for frame-by-frame editing by keeping graphics tied-to-ground even when the camera moves.

Coach Paint is both Mac OSX or PC Windows-based.

KEY FEATURES



RICH TELESTRATION AND ANALYSIS TOOLS:

- **Automatic Chroma Keyer** simplifies keyed graphics workflows, especially when dealing with changing conditions like shadows on parts of the pitch.
- **Timeline View** enables each tool present in a video clip to be placed into a row that is fast to view or modify. This also applies to each tool's individual keyframes.
- **3D Pitch Calibration and Arrow Tool** allows for enhanced real time 3D graphics, showing ball trajectory and enhanced on field visualization.
- **3D Column Tool** allows users to keyframe and follow players using a 3D object.
- **Moveable Players Effect** allows users to move players to different positions on the pitch or field. Players can be highlighted with a glow, removed from the field, or scaled in size.
- **Formation Tool** allows users to tell tactical stories using on screen counters and telestrate onto the field.



IMPRESS YOUR AUDIENCE

- Beat out the competition with impressive visuals for school recruitment presentations in player locker rooms, at home or on campus.
- Playback and voice over video as it plays to highlight prospect positioning in your team's offense and defensive formations.
- Create virtual playbooks to educate players on team plans and coaching strategies.



CUSTOMIZABLE USER INTERFACE

- Inspire team spirit with a branded interface that matches the appearance of your in-house graphics.
- Custom profile creation makes it easy to tailor Paint for sport-specific or user-specific setups.



ADAPTABLE USER-INTERFACE

The ability to choose between a presentation and production format at the flip of a switch compliment any video editing workflow, and gives you two products for the price of one.

TECHNICAL SPECIFICATIONS

FAST AND POWERFUL ILLUSTRATED REPLAYS MADE EASY

BASE SYSTEM CONFIGURATION (MAC)

- 2.2GHz
- 2.2GHz quad-core Intel Core i7 processor (Turbo Boost up to 3.4GHz) with 6MB shared L3 cache
- Configurable to 2.5GHz quad-core Intel Core i7 (Turbo Boost up to 3.7GHz) with 6MB shared L3 cache or 2.9GHz quad-core Intel Core i7 (Turbo Boost up to 4.0GHz) with 6MB shared L3 cache.
- 256GB PCIe-based flash storage
- Graphics: Intel Iris Pro Graphics

EXPANSION

- Two Thunderbolt 2 ports (up to 20 Gbps)
- Two USB 3 ports (up to 5 Gbps)
- HDMI port
- 3.5mm headphone jack
- SDXC card slot
- Apple Thunderbolt to FireWire Adapter
- Apple Thunderbolt to Gigabit Ethernet Adapter

BASE SYSTEM CONFIGURATION (PC)

- Microsoft® 10 Professional 64
- Intel® Core™ i7-4710MQ. Requires Intel HD 4000 graphics card. (2.5 GHz, up to 3.5 GHz with Intel Turbo Boost Technology, 6 MB cache, 4 cores)
- Chipset: Mobile Intel® QM87
- 8 GB 1600 MHz DDR3L SDRAM (2 x 4 GB)
- Memory Slots: 2 SODIMM (for dual-core processor) or 4 SODIMM (for quad-core processor)
- 256 GB PCIe SSD
- DVD+/-RW SuperMulti DL

NETWORK INTERFACE

Integrated Intel I217-LM Gigabit Network Connection

AUDIO

DTS Studio Sound HD audio (Windows OS only); Integrated stereo speakers; Integrated microphone (dual-microphone array when equipped with optional webcam); Button – volume mute, volume up/down keys; Combo microphone in/stereo headphone out jack

TECHNICAL SPECIFICATIONS

FAST AND POWERFUL ILLUSTRATED REPLAYS MADE EASY

EXPANSION FEATURES (PORTS)

- 3 USB 3.0 (1 charging); 1 USB 2.0
- 1 Thunderbolt™ 2
- 1 DisplayPort 1.2
- 1 stereo microphone-in/ headphone-out combo
- 1 power connector
- 1 RJ-45
- 1 docking connector
- 1 secondary battery connector
- 1 VGA

EXPANSION FEATURES (SLOTS)

- 1 ExpressCard/54
- 1 SD; 1 smart card reader

CODECS SUPPORTED

- Import/Export (Partial List)
- J2K; MJPEG; QuickTime Animation (RLE); Raw DNxHD; H.264 / AVC / MPEG-4 AVC / MPEG-4 part 10

SERVICES

CHYRONHEGO PARTNERS WITH YOU TO PROVIDE CUSTOM CREATIVE SERVICES

Offering custom graphic and skin design, our in-house expert designers can deliver stunning content to fit any program or team and create a truly bespoke experience.

ABOUT US

ChyronHego is ushering in the next generation of storytelling in the digital age. Founded in 1966 as Chyron, the company pioneered broadcast titling and graphics systems. With a strong foundation built on over 50 years of innovation and efficiency, the name Chyron is synonymous with broadcast graphics. ChyronHego continues that legacy as a global leader focused on customer-centric broadcast solutions. Today, the company offers production professionals the industry's most comprehensive software portfolio for designing, sharing, and playing live graphics to air with ease. ChyronHego products are increasingly deployed to empower OTA & OTT workflows and deliver richer, more immersive experiences for audiences and sports fans in the arena, at home, or on the go.

CONTACT SALES

NORTH AMERICA

+1.631.845.2000 | noram@chyronhego.com

EMEA

+46 8 534 88 300 | emea@chyronhego.com

LATIN AMERICA

+1.305.972.1396

ASIA/PACIFIC

+65.64071330 | asia@chyronhego.com

