

Cinegy Air PRO Bundle

multi-channel playout & channel branding



Cinegy Air PRO is the next logical step in the evolution of broadcast automation and playout. Gone are the racks of boxes, replaced by IP-connected real-time software engines handling multiple channels running on physical servers, in virtual machines or in the cloud. Cinegy Air PRO provides broadcast automation and real-time video playout for SD, HD, UHD/4K and 8K. As an integrated software suite, it is offering unparalleled flexibility by playing mixed format and mixed resolution content as well as realtime-rendering edit sequences straight to air - making it ideal for news, sports, live studio as well as scheduled playout operations - all this with template-based, dynamic branding on top.

Flexible and Scalable

Cinegy Air PRO provides a software-based system for SD, HD, UHD and 8K playout automation using standard IT hardware. It performs video playout by acting as a TCP/IP-connected video "printer" offering its services in a network. The Cinegy Air PRO broadcast automation software connects to the playout service and instructs it what to "print" to air and when. Cinegy Air PRO consists of two elements: a control panel and a playout engine. Cinegy Air PRO control panel provides a state-of-the-art interface for controlling one or more playout channels connected via TCP/IP. Cinegy Air PRO playout engine executes the playlist provided to it and renders video and audio to air. It also sends real-time video stream feedback to the control panel interface, eliminating the need for video monitors as well as SDI cabling and routing.

Future-Proof

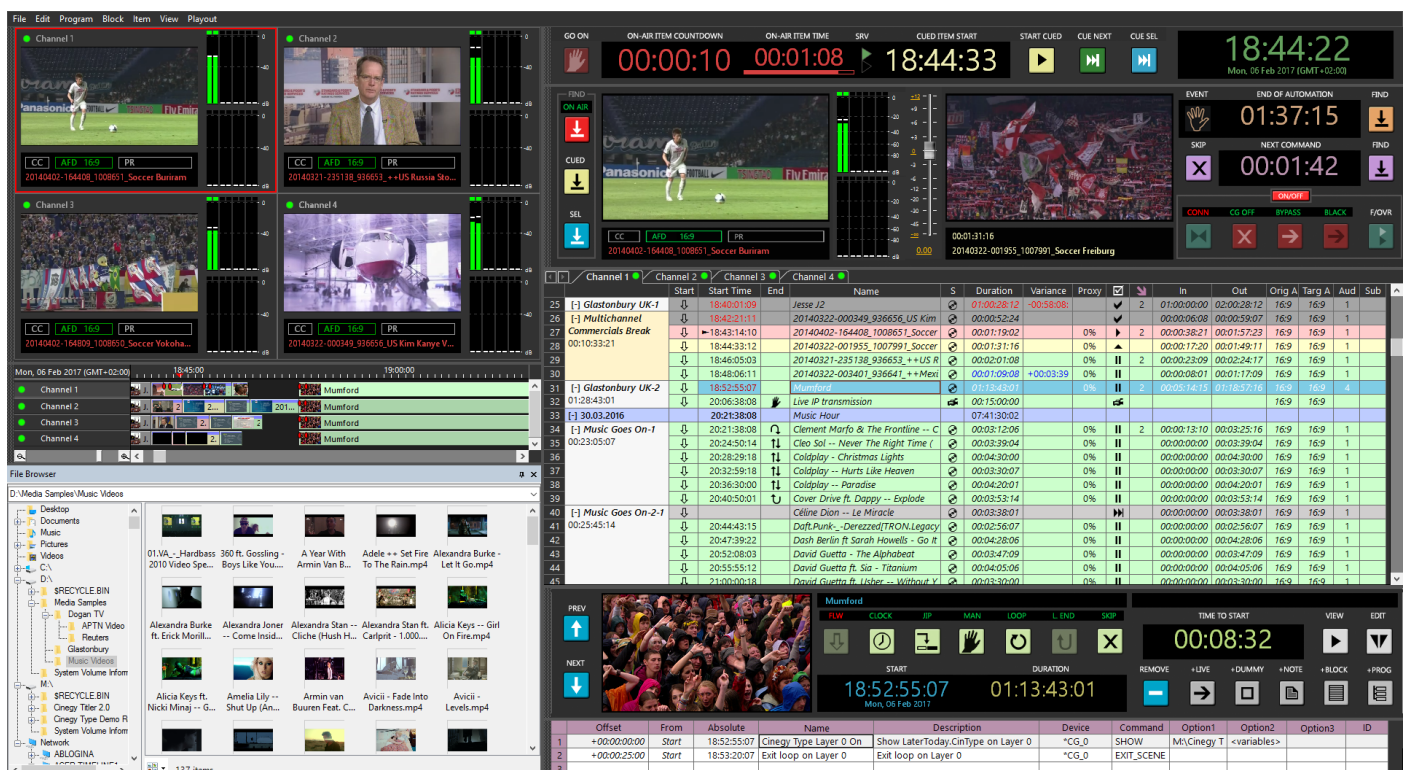
Cinegy Air PRO is software-based and runs on standard IT hardware and certified, standard SDI video cards and/or purely via NDI or IP. As a result, an UHD playout server can fit into a single rack unit. Cinegy Air PRO playout channels can also be set up to stream programs live without requiring additional hardware or software. Cinegy Air PRO supports multi-channel operation, including simultaneous playout of several channels which can be controlled by a single Cinegy Air PRO control application. Multiple instances of Cinegy Air PRO playout can run on a single powerful machine transforming it into a server broadcasting multiple independent channels. Cinegy Air PRO is also available on AWS and Azure.

Live

Cinegy Air PRO is also a cart wall / trick mode playout for news, sports, reality show, and other live operations. A/B roll, gang, slow-motion, loop, and bounce playback features are all supported and can be controlled with the Cinegy Studio PRO UI control panel, via RS-422 compatible devices using 9-pin protocol, GPI or external API calls. In a live news production environment, Cinegy Air PRO can be connected to a Cinegy Archive integrated newsroom solution and used to control up to 4 independent playout engines along with Cinegy Titler graphics and Cinegy Prompter teleprompting software. Cinegy Air Studio Control can be integrated into a 3rd party MOS-based newsroom solution such as ENPS, Avid iNews, Octopus or Annova Systems, automatically updating all rundowns as they change. Cinegy Air PRO can playout files that are still being recorded.

High Availability

Cinegy Air PRO upholds a high level of fault-tolerance and high-availability, while providing all the advantages of centralized storage and object oriented cloud storage. For additional safety a background service can cache all the media items in a channel's playlist ahead of time to local storage. For each Cinegy Air PRO channel, one or more slave channels can be defined, all of which will play, frame accurately, the same media as the master, ensuring reliable failover, if ever needed.



Cinegy Air PRO interface

Cinegy Air PRO Bundle

multi-channel playout & channel branding



Cloud Compatible

Cinegy Air PRO runs in the cloud on AWS or Azure, virtualized using VMWARE, Microsoft Hyper-V or Citrix XenServer virtualization. Running Cinegy Air PRO playout on a virtual machine (VM) has many advantages such as better hardware utilization, instant deployment of additional channels, much easier migration and inexpensive high availability clustering.

As SDI cards cannot be virtualized but may still be needed where they cannot be replaced by IP streams, baseband I/O and real-time SDI to IP conversion can be offloaded to using Cinegy Encode as a gateway.

Integration with Traffic and MAM

Cinegy Air PRO can work completely standalone or in concert with the Cinegy Archive MAM solution as well as many leading 3rd party traffic solutions. Metadata like rights, conditional access (CA), V-Chip and other information will seamlessly migrate to the Cinegy Air PRO playout schedule. Cinegy Air PRO also integrates with middleware platforms for EPG creation and CA triggering.

Channel Branding and CG

Cinegy Air PRO comes with the software-based CG and branding option, which allows the addition of multiple layers of automation controlled, template-based titles, logos, animated graphics. A whole range of advanced effects and features is included to cover anything from simple ticker tapes and lower thirds to multilayer character animations linked to external data sources.

Cinegy Air PRO automation can trigger up to 10 simultaneously graphic scenes with variable parts of the templates being updated either manually or automatically. A separate control panel Cinegy CG would let you easily start live or emergency graphics across the entire playout network. With the help of Cinegy Studio PRO you can build a playlist with pre-populated graphics for a typical live talk show or news program.

Cinegy Air PRO comes with the Cinegy Titler creative tool, which allows you to build creative templates offline with all the effects and features required for highly automated daily channel branding or live studio graphics:

- Add basic effects to text, such as a shadow, border, glow or bevel, change the color and transparency.
- Control the way text appears, change the position, rotation, color or size, or add effects.
- Add fixed, crawling or rolling text, with either static or templated content.
- Add size control effects to text for the right look as content changes.
- Insert logos, pictures, video, audio or animations, with a range of formats supported e.g. GIF, TIF, BMP, JPEG, EPS and AVI, MXF, MOV or MPEG.
- Create text variables which can be changed just before playout.
- Items can be played once, run on a loop, or ping-pong from left to right.
- Add multiple layers for complex compositions involving multiple objects.
- Manage items and define in and out points using the timeline. Create smooth transitions or control movement with bezier curves.
- Create masks and dynamically occlude text and video.
- Insert countdowns, clocks, and stopwatches with complex formatting.
- Use a simple macro language to automate metadata display directly from the playlist.
- Templates, once created, can be re-used with minimal effort.

Features Overview

- Local, virtualized or cloud based playout and branding
- All SD, HD, UHD and 8K formats up to 50/60p
- Scheduled operation and live studio production
- Integrated channel branding and live CG
- Mix different codecs, resolutions, and aspect ratios
- Real-time automatic up/down conversion
- Simulcast in SD, HD, UHD and 8K via SDI, NDI, IP and web
- SDI I/O via AJA, Blackmagic and Deltacast boards
- Generate MPEG-2, H.264, and HEVC live IP streams
- Use multiple incoming SDI, NDI or IP feeds
- 608/708 closed captions support and decoding
- OP42/47 subtitles support and pass-through
- Integrated Dolby® Digital and Dolby® E decoding and encoding *
- Control multiple playout channels over network
- Multichannel commercials insertion - master and breakout channels
- Automate commercials opt-out via SCTE 35
- R128/CALM loudness limiter
- Playout while capture
- Up to 16 TV channels on a single machine / server
- Up to 64 audio channels per playout channel
- Automatic file caching from network
- Mirroring for redundancy
- V-Chip and AFD support
- EAS compliant
- SDI router control
- 3rd party traffic integration *
- Advanced metadata management *

* Requires a dedicated product or license option.

Baseband I/O

Cinegy Air PRO supports a wide variety of SDI boards:

- AJA Kona and Corvid series
- Blackmagic Design Decklink series
- Deltacast SDI family
- various others ...

Supported Codecs and File Formats

- Apple ProRes
- AVC-Intra / AVC-Ultra
- Sony XDCAM up to HD422
- Avid DNxHD/HR
- Sony XAVC
- Sony IMX
- DV up to DVCPRO HD
- HDV
- H.264
- HEVC
- MPEG-2
- DV
- MXF OP1a
- MXF AS-03
- MXF AS-11 / DPP
- Windows AVI
- QuickTime MOV
- WAV and MP3 audio files
- JPEG2000
- JPEG, PNG, BMP etc.
- Cinegy Daniel2
- many more ...